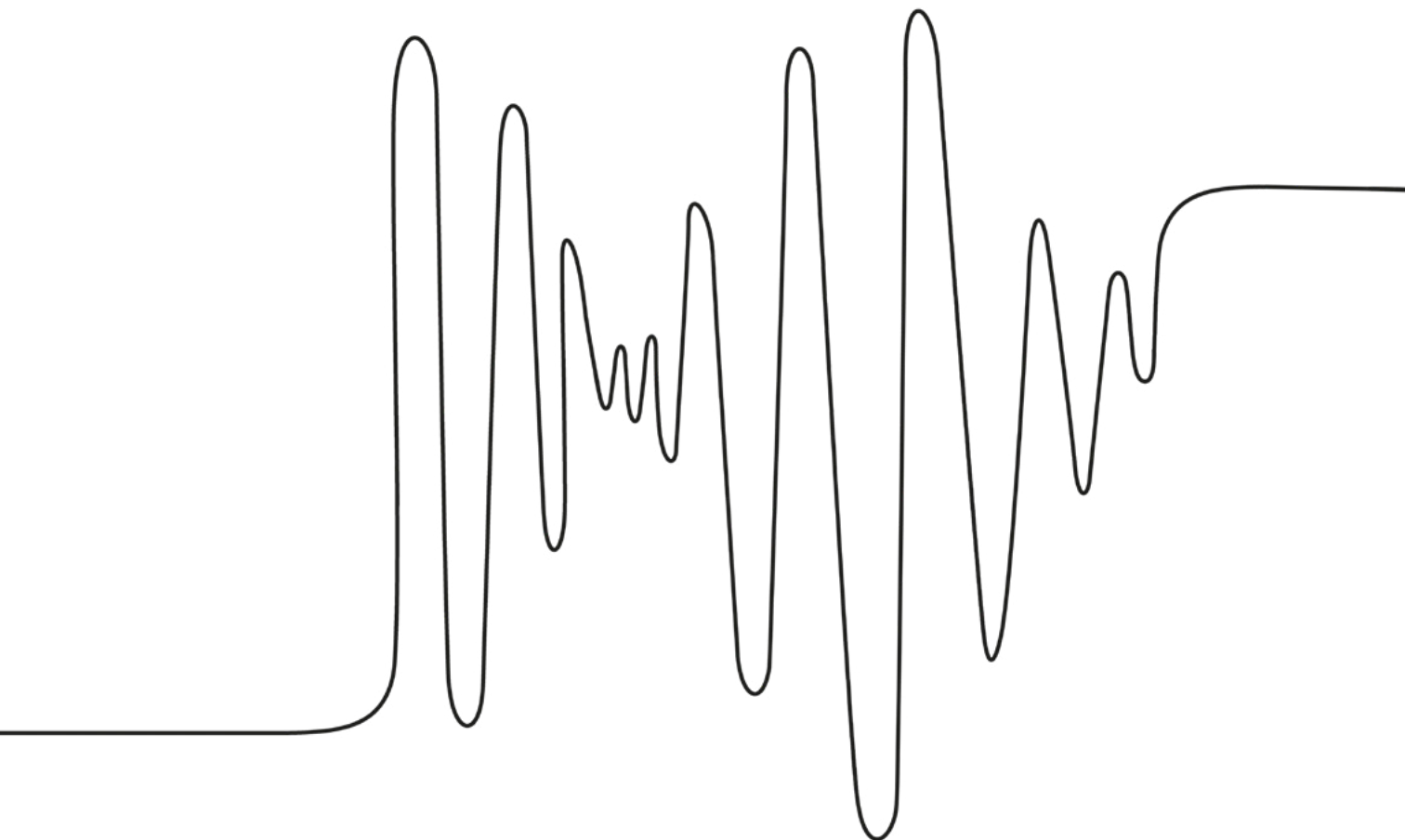


ACOUSTIC SOLUTIONS

INSPIRED BY SILENCE



architected sound



OPTiDi

Modern form with an elegant touch



diffusion



absorption



low tones

OptiDi, whilst giving your interior a unique aesthetics, it combines philosophy of minimalistic design and great acoustic properties. Its specific shape made of aluminium provides sound diffusion combined with efficient absorption in a lower frequency range. OptiDi is one of a kind diffuser providing a great visual effect and outstanding acoustical performance.



www.architected-sound.com

architected sound



OPTIDI PANEL

In the modular direction



diffusion



absorption



low tones

OptiDi Panel is a compact acoustic system with a wide range of applications. Its unique shape and colour enlivens any room and gives it a unique character, combining the visual and sound side.

It is precisely molded from aluminium in two forms, providing sound dispersion over a wide frequency range and optional bass absorption.



www.architected-sound.com

architected sound



SLOTBAR ALU

Effortless, classic and tasteful



absorption



low tones



mid tones

SlotBar is a modular sound-absorbing system. Its properties result from specifically designed slot system which maintains optimum acoustic conditions and provides innovative shape. The whole structure made from aluminium guarantees sound absorption in the low frequency range. SlotBar can be used as a standalone system or in addition to our OptiDi diffuser.

www.architected-sound.com



architected sound



ACOUSTIC PAINTING

A great piece of (acoustic) art!



absorption



mid tones



high tones

Acoustic Painting is a sound-absorbing panel which takes shape of a picture. It can be ordered as a photo reproduction, graphics or a painting. The artists we work with decided to entrust us with their art, giving their creations a new usable dimension in the form of acoustic panels. Acoustic Paintings can also be ordered in an ecological version, made of materials mainly from recycling.

www.architected-sound.com



architected sound



UP-SORBER WALL

Unique creation of space



absorption



mid tones



high tones

From single rectangular shapes to more sophisticated structures, this unique system gives you options to mount both on walls and ceilings. Up-Sorber Wall is made of specific sound-absorbing filling covered with acoustic textile providing variety of types, colours and textures. The greatest advantage of Up-Sorber Wall is it can be used in any room, preventing acoustical environment from the flutter echo.



www.architected-sound.com

architected sound



UP-SORBER ROLL

One space, diverse capabilities



absorption



mid tones



high tones

Up-Sorber Roll was created to meet the requirements of adjusting the acoustics in multifunctional spaces. This purpose was achieved by designing the fabric surface rolled up or down to any length required to fit particular environment. Thanks to dedicated control system, setting proper acoustics has never been easier.



www.architected-sound.com

architected sound



UP-SORBER PANEL

Simplicity is always the key



absorption



mid tones



high tones

Up-Sorber Panel is a timeless rectangular element designed to absorb middle and high frequency range and create comfortable, quiet environment. Despite its simple shape the possibilities are almost unlimited here – the structure consisting of Up-Sorber Panels can be designed as multicoloured composition of different panel dimensions, giving an individual character to any interior.



www.architected-sound.com


architected sound



TILT7

In the direction towards good sound



reflection



low tones



mid tones



high tones

Tilt7 is our variation on regular acoustic ceiling panels. This simple frame at an angle of 7° can be mounted in four directions, holding a reflective tile and making flutter echo in your interior comfortably reduced to a minimum. You can also customize them in terms of design, picking different colours.

www.architected-sound.com



architected sound



TILT WALL

Sound directed towards you



reflection



low tones



mid tones



high tones

Tilt Wall was designed in the form of a frame that allows the sound reflection plane to be deflected to the wall surface. Its biggest advantage is the ability to direct the early sound reflections. Depending on the type of material filling the frame, you can eliminate the flutter echo effect, achieve a significant improvement in speech intelligibility, or reduce reverberation over a wide range of acoustic bandwidth.

www.architected-sound.com



architected
architected sound



TILT LITE

Shape up your space



reflection



low tones



mid tones



high tones

Tilt Lite is an extremely light wall acoustic system, created in order to properly direct the reflections of the sound wave. The 7° inclined mounting bracket enables the front plate to be directed in any direction. Tilt Lite is a universal and individually selected element of acoustic treatment of the interior, which allows you to create interesting visual forms.

www.architected-sound.com



architected sound



REFFUZOR

Sound under control



reflection



low tones



mid tones



high tones

Reffuzor ceiling panel with the basic function of directing sound has been designed in order to reflect the sound waves in the extended frequency range.

The possibility of permanent suspension or setting the angle of inclination allows to adjust the acoustic parameters of the room, depending on the type of artistic event.

If you need only a sound reflection panel, please search our website for a product called **Reflex Panel**.

www.architected-sound.com




architected sound



EcoPET

Acoustics for the environment



absorption



mid tones



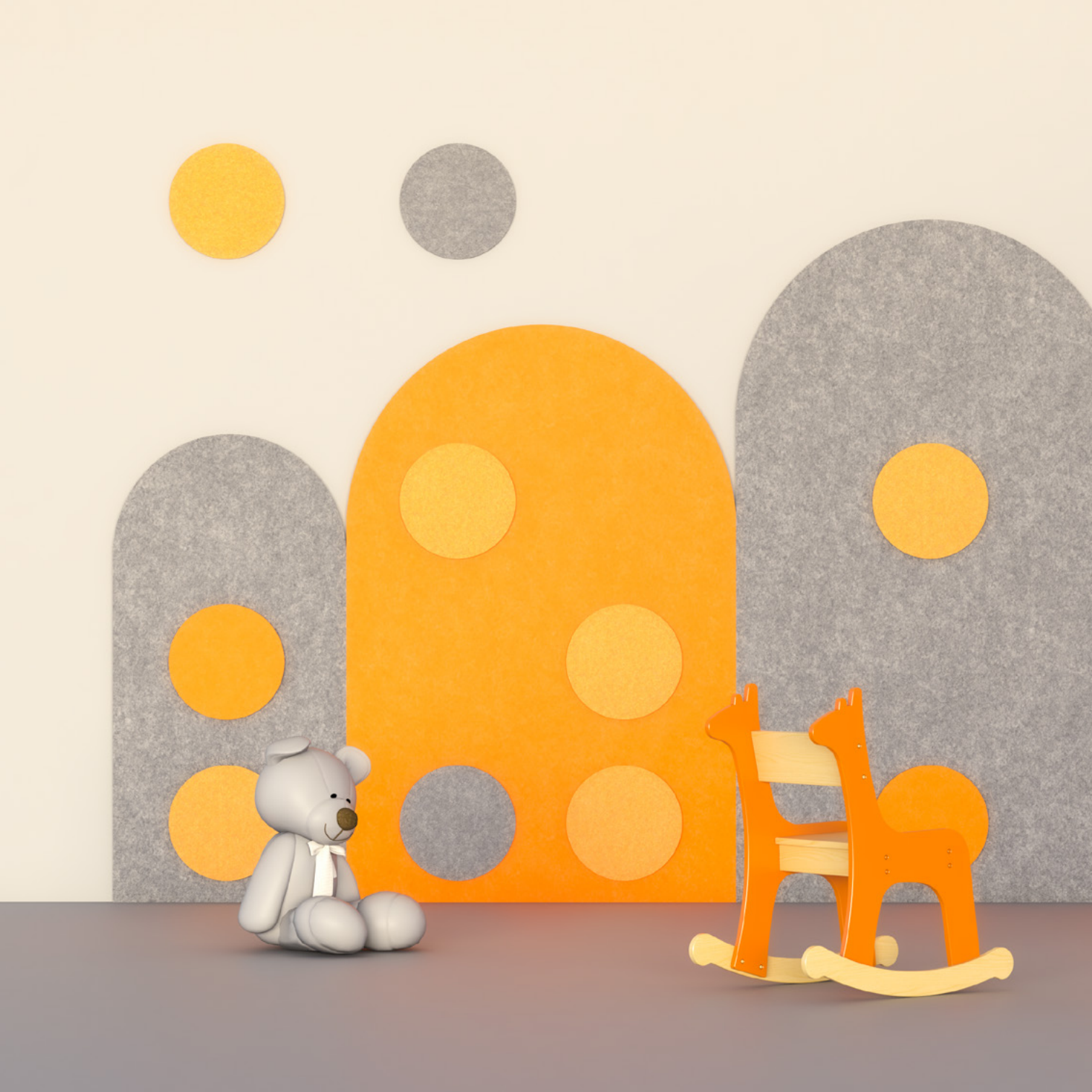
high tones

EcoPET are acoustic tiles, panels and other forms, made of non-dusting, non-toxic and 100% environmentally friendly material which is characterized by a high sound absorption coefficient. With EcoPET, you can cut any shapes, combine colours and thicknesses, and complement them with other sound-absorbing materials. Combination with the EcoFELT acoustic felt guarantees even more interesting visual forms.

www.architected-sound.com



architected sound



EcoPET for Kids

Fairy-tale-like



absorption



mid tones



high tones

EcoPET for Kids is a range of sound absorbing panels specially designed with our little ones in mind.

By reducing noise in rooms, acoustic panels ensure that children can thrive and grow in health.

EcoPET material can be formed into different shapes and sizes so it can stimulate children's imagination. Moreover, it can act as a construction set for the kids to play with.

The possibilities are endless.

www.architected-sound.com



architected sound



EcoPET

the Contour

Fine line



absorption



mid tones



high tones

EcoPET the Contour is a decorative, 3-D acoustic panel that can create variety of different designs on your wall. From simple shapes, such as horizontal stripes to oval compositions, you can transform your wall to any abstract form you like, creating comfortable indoor climate.



www.architected-sound.com

architected sound



EcoPET

the Desk Divider

Divide the silence



insulation



absorption



mid tones



high tones

EcoPET the Desk Divider is a sound-absorbing desktop partition that effectively reduces reverberation noise in a room and provides employees with a sense of privacy.

The combination of glass and EcoPET material guarantees a high level of acoustic insulation between workspaces and allows you to match the colour and form to any interior.

www.architected-sound.com



architected sound



EcoPET the Blinds

Shield yourself from noise!



absorption



mid tones



high tones

EcoPET the Blinds are sound-absorbing vertical acoustic window blinds whose slats are made of PET - a dust-free and 100% environmentally friendly material. Replacing standard window covers, the Blinds are great at dealing with excessive sunlight and reverberation noise at the same time, ensuring perfect comfort and silence in any room.

www.architected-sound.com



architected sound



EcoPET the Lamp

Light up your space



absorption



mid tones



high tones

EcoPET the Lamp is an acoustic light fitting with high sound absorption efficiency. It is made of EcoPET and EcoFELT, non-dusting and 100% environmentally friendly materials. By replacing standard lamps, EcoPET the Lamp will not only provide proper lighting, but also reduce reverberation noise, ensuring perfect comfort and silence in any interior.

www.architected-sound.com



architected sound



EcoPET the Abstract

Silent beauty



absorption



mid tones



high tones

EcoPET the Abstract is a decorative sound-absorbing panel in a shape of 3-D image, designed to absorb a wide range of mid and high tones. It helps to reduce the unwanted reverberation that causes amplification of noise.

www.architected-sound.com



architected
sound



EcoPET

the Overlay

Create your own acoustic space



absorption



mid tones



high tones

EcoPET the Overlay is a sound-absorbing radiator cover with a very high efficiency of reducing reverberation noise. Available in many different designs, shapes and colours.



www.architected-sound.com


architected sound



EcoPET the Underlay

Create your own acoustic space



absorption



mid tones



high tones

EcoPET the Underlay is a sub-furniture acoustic system that uses passive and unused surfaces of furniture to introduce materials with a very high efficiency of sound absorption. The shape of the Underlay elements has been designed in such a way that their use does not affect the ergonomics of using the furniture.

www.architected-sound.com




architected sound



EcoPET the Skin

Create your own acoustic space



absorption



low tones



mid tones



high tones

EcoPET the Skin is an acoustic furniture front.

By replacing the standard fronts made of sound-reflecting material, the Skin absorbs sound in the low, medium and high tones.

This functionality provides extremely effective acoustic properties given a very small thickness.

www.architected-sound.com



architected sound



EcoPET the Screen

Create your own acoustic space



absorption



mid tones



high tones

EcoPET the Screen is a sound-absorbing acoustic partition made in a free-standing or hanging form. It is not only a barrier to sound, but also eliminates occurring acoustic defects in rooms, i.e., too long reverberation or flutter echo. By using EcoPET the Screen, you can separate a part of a larger room, creating a workspace with much greater acoustic comfort.



www.architected-sound.com

architected sound



EcoPET the Grid

(No) more grating



absorption



mid tones



high tones

EcoPET the Grid was created to revitalize flat acoustic modular and raster suspended ceilings, also using the standard T24 and T15 construction. The spatial structure of the Grid elements, made of a material with a high sound absorption, translates into a much higher acoustic absorption capacity per square meter of the ceiling compared to commonly used solutions. The system enables the creation of three-dimensional, multi-coloured and multi-layer spatial structures while ensuring excellent sound absorption properties.

www.architected-sound.com



architected sound



EcoPET the Baffle

Acoustic ceilings revamped



absorption



mid tones



high tones

EcoPET the Baffle is a sound absorbing ceiling system consisting of vertically mounted panels. This is an excellent way of providing the space with acoustic absorption, especially in areas where a traditional suspended ceiling is impossible to install. EcoPET the Baffle allows you to create both simple and fun visual structures while taking care of the sound reverberation and noise.



www.architected-sound.com

architected sound



EcoPET

the Ceiling Tile

Understated framework



absorption



mid tones



high tones

EcoPET the Ceiling Tile is our coloured answer to monochrome acoustic modular suspended ceilings, using the standard T24 and T15 construction. Our coffers are made of a material with a very high sound absorption properties and come in two basic thicknesses and two assembly variants: with a visible edge (visible grid) and with a bevelled edge (discreet groove and invisible grid).



www.architected-sound.com


architected sound



EcoPET the StandAlone

The upstanding acoustic warrior



absorption



low tones



mid tones



high tones

EcoPET the StandAlone is a free-standing acoustic panel that absorbs sound in the full frequency range. Perfect for use in spaces with various functions or a free arrangement of furniture. It will be a great fit as part of pop-up spaces or in interiors where it is not possible to interfere with the existing decor (e.g., historic spaces).

www.architected-sound.com



architected sound



EcoPET on Wheels

A versatile room divider



absorption



mid tones



high tones

EcoPET on Wheels is a mobile acoustic system that absorbs sound and has the optional acoustic insulation function. Perfect for use in multifunctional spaces or with free furniture arrangements. It will be a perfect fit in pop-up spaces and in interiors where it is not possible to permanently interfere with the existing decor (i.e. historic spaces).



www.architected-sound.com

architected sound



EcoPET

the Drum Shield

Keeping low profile



insulation



absorption



mid tones



high tones

EcoPET the Drum Shield is the first professional drum screen that combines the sound-absorbing and insulating properties. This product was created as a solution to the problem of excessive sound reflection from standard screens made of plexiglass, and now it allows to maintain appropriate harmony between the instruments.

The use of sound absorbing EcoPET material on the drummer's side in combination with a soundproofing layer hidden inside the panel reduces the noise of the drums heard by other musicians, which increases their playing comfort.



www.architected-sound.com

architected sound



BENGLE

product designer: Dominika Gulińska



absorption



mid tones



high tones

The Bingle together with EcoPET is a piece of furniture that involves sound absorbing material that doubles up as a seat. Easy assemble and dismantle, the possibility of using it as a seat, bar stool, worktop or leg rest makes it an ideal solution when unexpected guests show up and you are running short on seating areas. A wide range of available colours used for a seat can create a perfect addition to any private or public room.

www.architected-sound.com



architected sound



Architected Sound x Bester Studio

EcoPET
STELLAR

EcoPET
STILKE

EcoPET
TRIGO

Sophisticated fusion



absorption



mid tones



high tones

Architected Sound x Bester Studio collaboration is a perfect blend of natural and synthetic resources. Natural wooden panels create warm environment in the room, whilst the recycled EcoPET material provides warm and soothing sound in any place. This combination enables to implement hard surfaces while reducing noise at the same time.

www.architected-sound.com




architected sound



Coming soon...

ECOPET the MeeSi

designed by Daria Miseika

Stay tuned to see our new
products come to life at:
www.architected-sound.com

Our team consists of acousticians, designers and assembly workers
with specialized education and extensive practical experience.

We truly believe **great design** can go hand in hand with great performance.
We develop technical products that are drafted
with great aesthetics in mind.

We are inspired by silence.

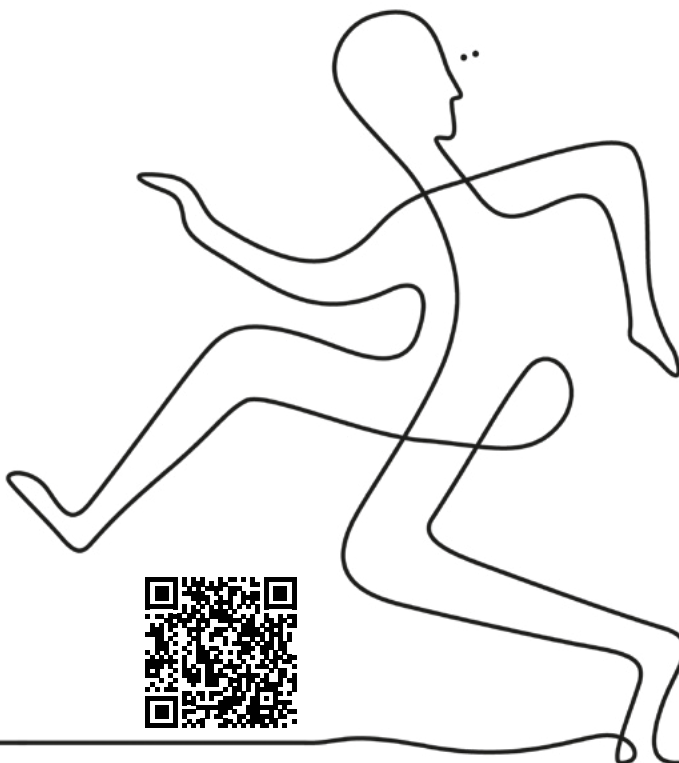
Due to our solutions, home can finally be a place of rest and respite.
Our creations are simple. They are functional, balanced, do not shout and do not litter,
they simply **just work**. Because great design is unobtrusive.
Now you don't have to choose between a visually pleasant form
and a comfortable, quiet environment.

We are bucking the system with creative and peaceful acoustic panels.

We are dreaming of a different world.
We want to give options, showcase the variety.
We are offering products that **matter**, they **transform** spaces into **comfortable** places.




architected sound



Architected Sound

Chalubinskiego 53
30-698 Krakow, Poland
info@architected-sound.com
+48 664 413 913

www.architected-sound.com

